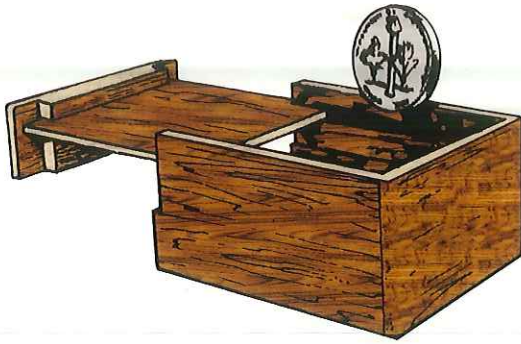


# CLOSE-UP MAGIC



## 1304 CABALA

In a new routine by Bill Taylor, the spectators may look *directly down* on the apparatus as the ball sinks into the glass! A small solid piece of glass is shown to tightly fit the bottom of a beautifully finished, shallow wooden box. Matching holes in the top and bottom of the box are located squarely in the middle of the glass, which blocks anything that could otherwise pass through the holes. After the glass and box have been examined, the glass is locked into the box by closing the lid and latching it. A large steel ball is placed in the hole in the lid, where it rests on the glass. While held at waist level the ball slowly starts to sink into the glass! When raised to eye-level the ball continues to sink until falling out the bottom of the box! When the box is opened, the glass is still in place, none the worse for wear! Beautifully made in rare, naturally finished woods.



**1306  
THE RATTLE BOX**

A marked coin or ring placed in a small wood box can be heard to rattle yet at any time may be found elsewhere. Useful for many tricks when it is desired to obtain possession of a small article magically.



**1319  
GHOST DICE**

A whole dice routine of close-up magic that is different from most other dice tricks. The dice not only vanish and change places, but they become transparent, change shape and actually flatten out to paper thin thickness. A highly visual effect with a humorous patter story. This whole routine is structured not just to exhibit dice skill but to entertain.



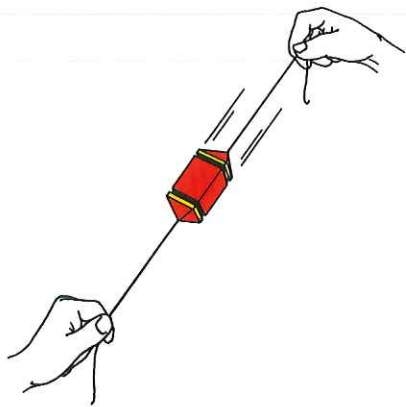
**1303  
RING OR COIN BOX**

An exquisitely made small box large enough to receive any coin up to and including silver dollar size. All the effects of the Lippincott quarter-go plus many more may be performed with this box.



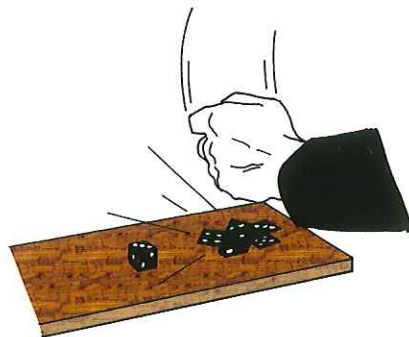
**1311**  
**DEMON RATTLE BARS**

Three nicely finished wood bars are shaken and only one of them is shown to contain a rattle. They are placed on a table and try as they may a spectator is unable to locate the rattle, for the rattling bar mysteriously changes places.



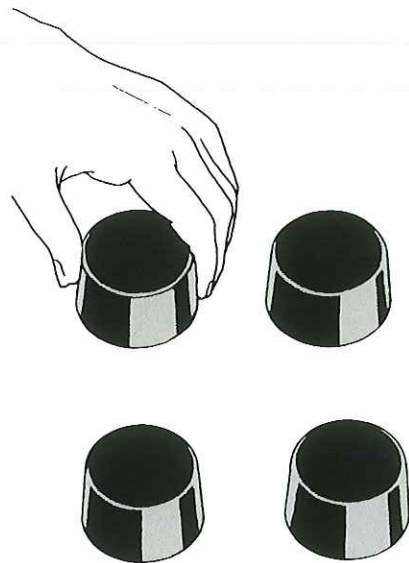
**1314**  
**COMMANDO**

A block is shown to run freely on a cord thru its center. However the block is under the control of the performer at all times, stopping at any point of the cord, moving fast or slow or answering questions by starts and stops. It may be placed into the spectators hands without them ascertaining its subtle secret.



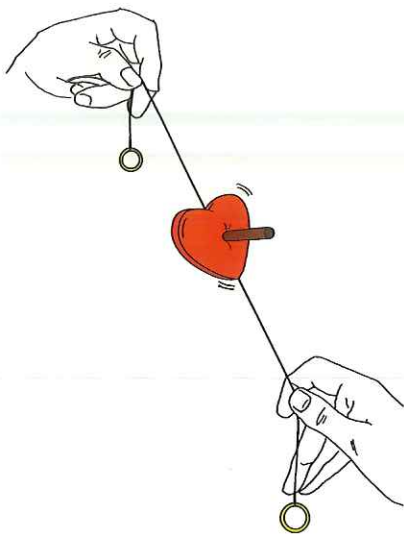
**1305**  
**SMASH!!!**

You place what seems like an ordinary 5/8" die on the table, smack it with your hand and smash it flatter than a flounder. No skill required and instructions include an astounding penetration and a novel card trick.



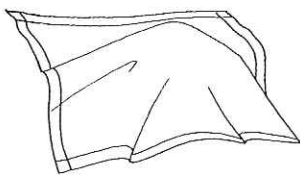
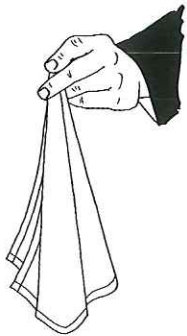
**1316**  
**CHINKO CHINKO**

Four small cones placed at the corners of an imaginary square are covered with the hands and one at a time collect themselves at one corner. A baffling and clever pocket effect made oh-so-easy with minimum skill by the use of the unique Owen gimmick.



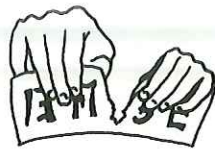
**1310**  
**THE TELL TALE HEART**

A large colorful wooden heart slides freely on a long cord, yet at the magician's command will stop at any point. This has many uses, for close-up work the spectator can try but will be unable to control it. On stage you can use patter suggestions based on Poe's famous story. For children's shows there is another patter tip, and certainly for St. Valentine's Day there should be applications!



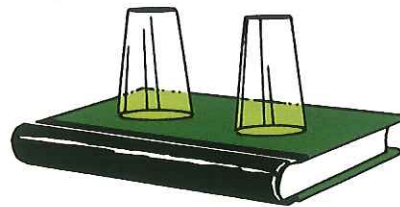
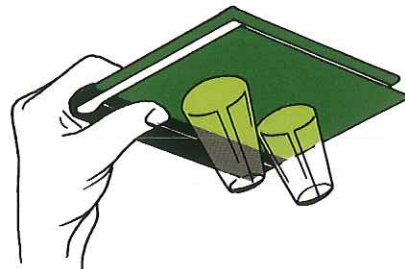
**1302**  
**"IT"**

The original Ghost in the Handkerchief -- it consists of the secret gimmick to make this intruder from outer space seem solid or soft in the Space Trap you form from an ordinary handkerchief, and which seemingly dissolves into nothingness as you unfold the handkerchief.



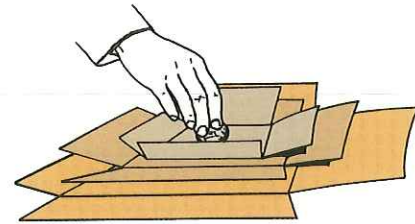
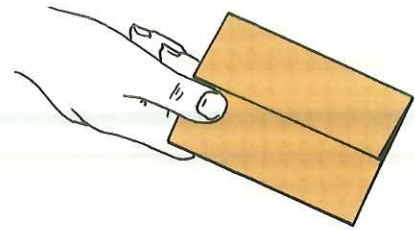
**1313**  
**LAUNDRY TICKETS**

A strip of paper printed in oriental characters is torn in many pieces yet when crumpled together and unfolded is found restored to its original condition.



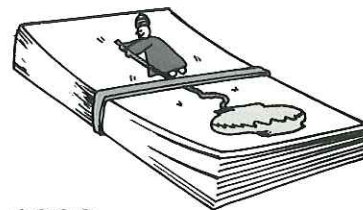
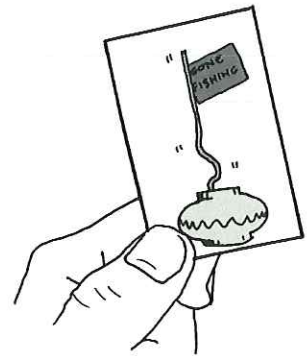
**1301**  
**THE MESMERIZED GLASSES**

Two or more drinking glasses defy gravity by clinging to the under surface of a book, disc or clear sheet of glass. Owen Magic supplies you with the necessary apparatus for this impossibility.



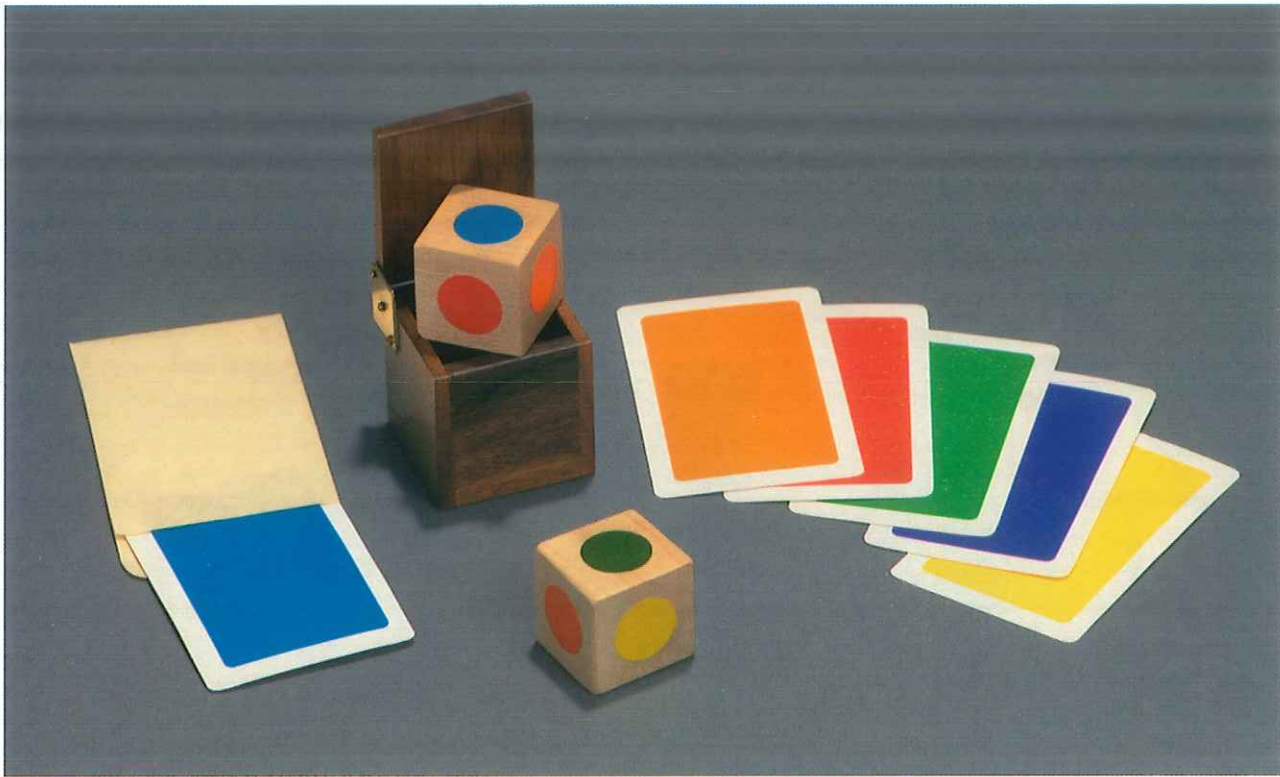
**1307**  
**MYSTIC PAPYRUS PAPERS**

A packet of papers is unfolded revealing another packet within. This also is unfolded revealing still another packet, and when this is opened a further packet is found. Any small flat object placed within this fourth packet and rewrapped will mysteriously vanish or change to a different article. An old favorite but still very effective.



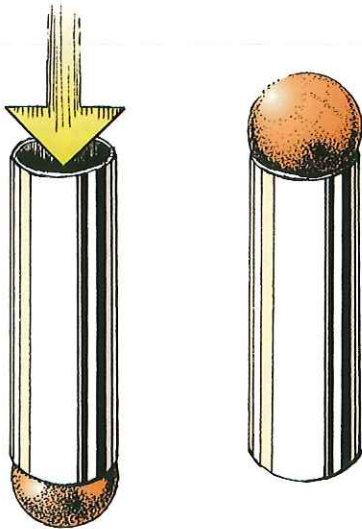
**1308**  
**GONE FISHING**

A spectator is asked to initial the front and back of a card with a picture of a Hindu boy climbing a rope. When asked to explain what happens to the boy of the trick he gets the answer by turning the card face up. A little cutie to carry with you.



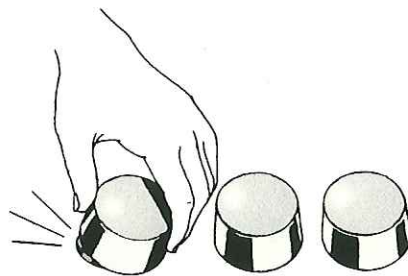
**1320  
SUPERCOLOR PREDICTION VISION**

An intriguing new version of "Color Vision" that will baffle any audience. A prediction climax that fools experts! The divinations are perplexing and the prediction employs a principle new to magic that is as amazing as the effect. The boxes are of natural hardwood and the cards are specially printed for this effect on plastic-coated stock. Owen quality apparatus.



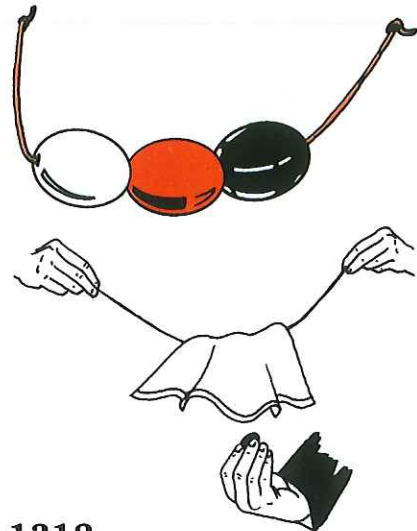
**1317  
BALL AND TUBE**

A metal tube is shown with a steel ball obviously too large to pass thru the tube but at the performers command the ball is seen to slowly sink into the tube and, when both items are passed for inspection, the tube is still smaller than the ball.



**1315  
BUDDHA CONES**

A spectator is invited to place a coin beneath any of three truncated metal cones while your back is turned. Upon turning around you immediately tell the position of the coin. You never touch the cones nor do you use a stooge. A very subtle method of divination in Owen quality.



**1312  
BEADS OF ZUSAN**

Three large differently colored beads are threaded and tied on two cords. A spectator holds the ends of the cords. The beads are momentarily covered and the performer removes the beads one at a time in any order they are called for.

By Appointment to the World's Greatest Magicians

**O M S**

*A Blend*

of the Finest Materials Available

Since  
**1902**

The Ultimate in Fine Magical Effects

**100 %**

Straight Quality Goods

Made in

**U. S. A.**

by

**OWEN MAGIC SUPREME**

